

ARTISTRY IN IRON



Nicholas Brumder
Brumder Ornamental Iron, Inc.
Georgetown, Texas

EUROPEAN ELEGANCE

Brumder Ornamental Iron, Inc. established as Liberty Forge in 1979 by Nicholas Brumder, is dedicated to creating the finest artistic metalwork to be found today. Combining traditional craftsmanship with contemporary tooling and practices, Brumder's work is highly prized by architects, designers, and collectors of fine art.

All of the items represented in this publication were produced by Nicholas Brumder and his staff. All were crafted of the finest materials and every effort was made to ensure a high degree of excellence in the finished product.



A Moderne Style handrail with a brass ball details & caprail. The bottom rail was fitted to the stringer. The newel has acanthus leaf ornaments. 47"l.



Above: This lovely chandelier graces the great room of a mountain retreat in Colorado. It is covered with acanthus leafwork & has a bronze finial. 6' diameter x 8'h with 12 lights



This charming, light, airy, entry with a contemporary flavor graces a house in the Hill Country of Texas. It incorporates wrought grills on forged bronze spindles. The two side windows open. 7'w x 8'h.

EXCEPTIONAL VERSATILITY

The great diversity of projects, in various styles, and materials, is evidence of our experience and ability. All of these projects started as fantasies, drawings, and sketches in iron. Whether you choose to work from your design or wish us to create an original design for you, we are ready to work with you to make sure your metal work is exactly what you want it to be. We have the facilities for creating detailed drawings and scaled models to show you the finished product, or we will make a prototype out of the proposed material so that you can be sure the design is perfect in all respects.

Our goal is your satisfaction. We combine the highest standards of artistic design and structural integrity with the practical considerations involved in any construction project. We will be happy to work within your budget. Because Brumder Ornamental Iron specializes in original designs, we welcome your ideas.



This gate and rail are reminiscent of the early Renaissance. The hammer-welded quatrefoils, the fluted collars and scrollwork, the pressed Gothic arches, make this gate and bronze capped rail distinctive. Gate – 4'w x 5'h. Rail – 3'6"h x 26'l



Nicholas Brumder forge welding at the anvil.

This elegant entry gate was commissioned to look like other work on the site and to provide additional security. Its delicate scrollwork is fastened with collars and supported on brass balls. It has several repoussé rosettes. 4'w x 8'h.

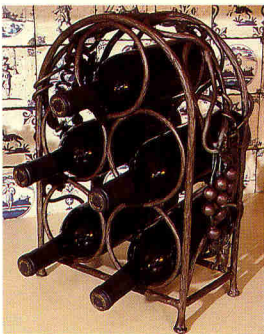
A SEASONED ARTIST

Nicholas Brumder, the founder and creative spirit of Brumder Ornamental Iron, discovered his passion for hot-wrought metalwork at an early age. At 17, Brumder studied sculpture and form theory under the noted sculptor Alex Weygers in Carmel, CA where he learned elementary smithing techniques. Seeking to begin a career in black-smithing, Brumder was accepted to apprentice under the nationally known Master Smith Francis Whitaker. Brumder spent nearly two years under the tutelage of

Whitaker as a smith and smith's helper at the Mountain Forge in Aspen, CO.

In 1979 Brumder established Liberty Forge in Crested Butte, CO. This was the forerunner of Brumder Ornamental Iron Inc. In 1985 he moved the forge & his family to Georgetown, Texas.

In 1988 Brumder went to Czechoslovakia to study the historical perspective and technique typical of the middle European style under Vaclav Yaros, internationally known Master Smith.



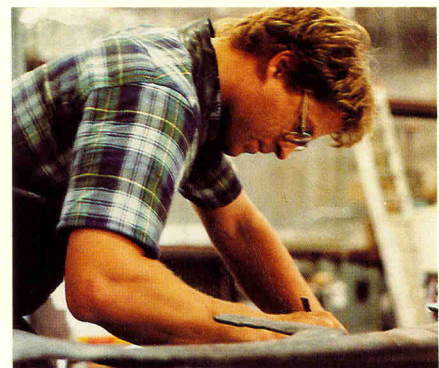
The large winerack (right) for the La Buca restaurant in San Antonio started as a small five bottle counter rack (above). The La Buca rack features hand forged grapes and room for over eighty cases of wine. It is 15' l x 9' h x 5' w.



The wine display grill for La Buca from forged and pierced round stock is 6' 6" h x 5' w.



This dining area grill, features fluted scrollwork, collars, and repoussé scroll ends. It is 4' 6" w x 5' 6" h.

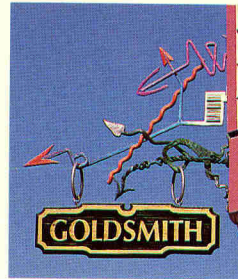


Drawing on the steel in preparation for cutting and raising. Brumder applies himself to excellence in applied art.

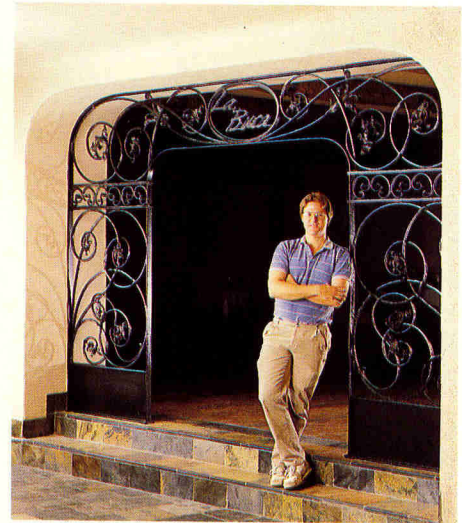
COMMERCIAL PROJECTS



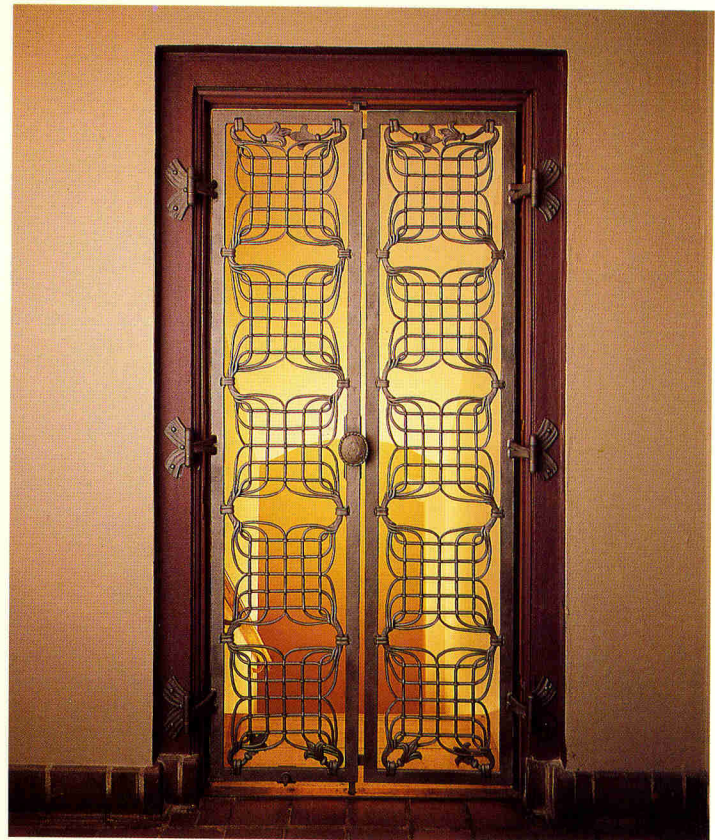
Above: The delicate entry gate for La Buca was used for their logo. It is sandblasted, cold galvanized, and painted and has a green patina. 6'w x 8'h.



Above: This colorful sign bracket, in Breckenridge, CO is 38" L. Right: This dining room entry grill for La Buca invites one into the room. 12' x 8". Like its companion it features fluted scroll-work and repoussé.



Below: The copper fireplace hood, also for La Buca, features chased strips of copper woven and pinned with copper headed nails. The hand formed edging adds to its charm. 5' 6" w x 4' 6" h.



Above: The Palmer Memorial Episcopal Church in Houston commissioned this gate to prominently establish the entrance to the new Chapel of the Resurrection & Collumbarium. The gate relates to its Italian Renaissance setting. Though spare and contemporary it has a richness and presence worthy of its heritage. There are 266 slit-punchings in the bars and framework, the bundled grill ends are forge-welded and collared to the frame. The cremorne secures the gates at the header & threshold. The gate is locked with a master key in the lower left frame. Note the lily ~ fleur de lis motifs and AΩ on the cremorne handle. 3'w x 7'h.

PRIVATE COMMISSIONS



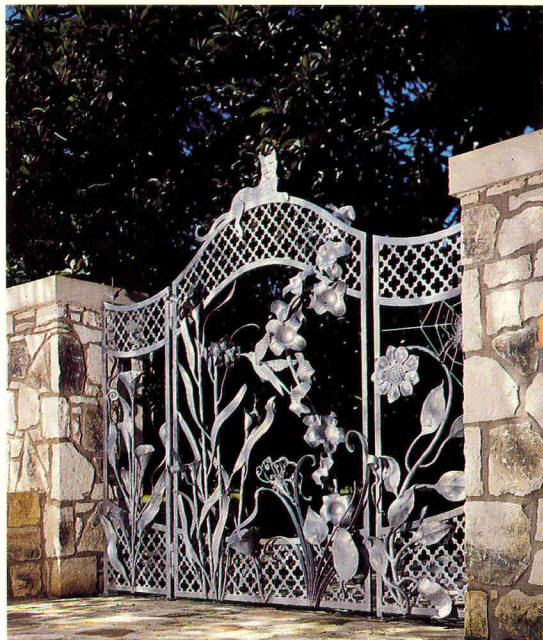
Left and right: Contemporary residential entry garden gates of hand hammered bar channel with ornate grill details and hand-wrought handles. Oxidized finish.



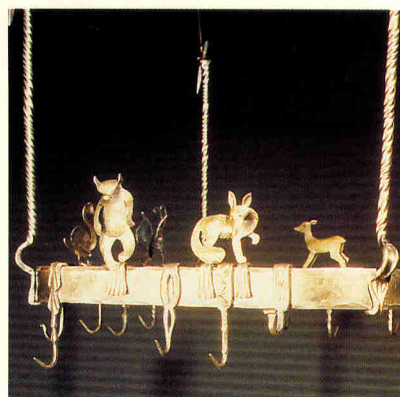
Right: These simple, elegant, twin size beds are in a southwestern style house.



Above: A small hand wrought bronze menorah. 8" w x 6" h



This fanciful entry gate, in the Hill Country of Texas, is seven feet high by nine feet wide. Its massive foliage was forged directly from bar-stock. It has many handwrought "critters," including a cat, a butterfly, a snail, a spider in a web, and several birds. The piece is hot dip galvanized. 8' 6" w x 7' h.



The sign bracket and potrack are particularly playful. The bracket, for Crested Butte, CO is 32" tall. The potrack with the little forged animal figures is 20" square.

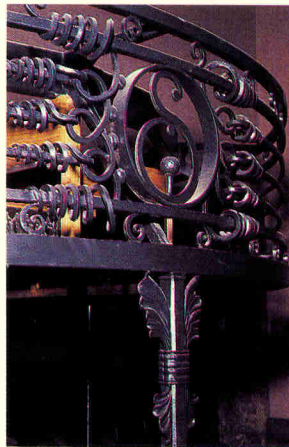
CONTEMPORARY OR REMINISCENT

Repoussage is the ancient art of raising metal in relief, bringing lively form and vigor to sheet metal. Repoussage provides full-bodied sculptural images — typically floral or figurative for a variety of purposes. The talent of a sculptor and the skill of a craftsman are required for this delicate art.

The Skyland Country Club in Crested Butte, Colorado features five chandeliers, twenty-two wall sconces, double gates to the pro-shop, railings, fireplace accessories, and a striking Moderne Style bar. Repoussé was used extensively in this project.



Clockwise from right: ➤ A detail of the bar showing leafwork forged "en masse." The Skyland S & golfball logo were also solid wrought. ➤ Chandelier in lobby. 6' diameter x 7'h. It has many raised acanthus leaves and bobèches and has eighteen lights. ➤ The ornate Moderne Style bar is self-supporting. 10'w x 25'l x 8'6"h.



A repoussé wall sconce. 14"h x 9"w x 6"d.



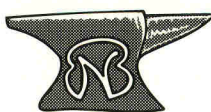
Detail from a copper hood for a walk-in fireplace near Almont CO. The hood is banded with wrought straps and joined with rivets. 14"h x 108"w x 12"d.



*Professional Photography by Swain Edens
Other Photos by Nick Brumder*



This memorial in Victoria Texas is hot-dip galvanized and painted. The cross elements are joined with heavy rivets and welded to the upright. 6'h x 3'w.



Nicholas Brumder
Brumder Ornamental Iron, Inc.
Formerly Liberty Forge

40128 Industrial Park • Georgetown Texas • 78626
(512) 869-2830